

**BY ORDER OF UNITED STATES DISTRICT COURT
NORTHERN DIVISION OF CALIFORNIA**

Public Auction

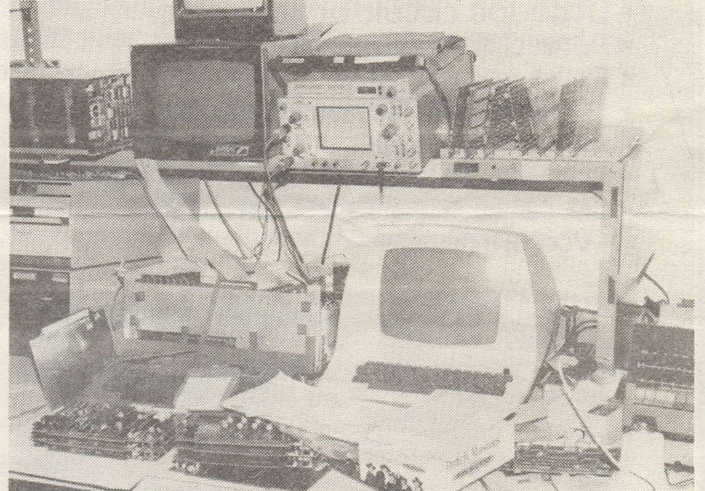
THE STANDARD OF
EXCELLENCE IN
MICROCOMPUTER
SYSTEMS

IMSAI

ON THE PREMISES
IMSAI MANUFACTURING CORPORATION
14860 Wicks Blvd., San Leandro

Bankrupt

**Wednesday, October 24th at
11:00 AM**



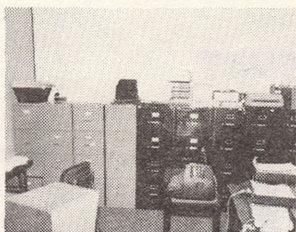
**Electronic Equipment
Shop Equipment • Large Parts Inventory
Prestige Office Furniture
IBM Correction II Selectrics Typewriters**

INSPECTION

Tuesday, October 23rd - 10:00 AM 'till 4:00 PM
Morning of Sale - 9:00 AM 'till Sale Time

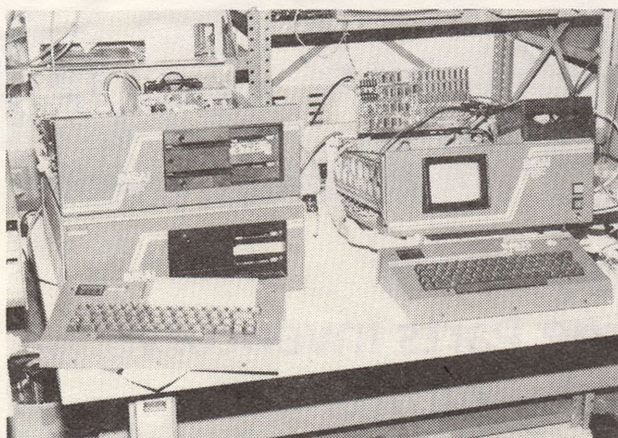
GOLDEN STATE AUCTIONEERS, INC.

One Hallidie Plaza, Suite 701 • San Francisco, California 94102
Telephone: **(415) 981-6941 or (415) 820-2357**



THE STANDARD OF
EXCELLENCE IN
MICROCOMPUTER
SYSTEMS

- Shop and test equipment
- Large metal shelving - Metal work tables
- Magnifying lamps
- Metal Roll around carts 2" x 5"
- Better Pack 555S Tape machine
- Hand trucks
- Metal stools
- Bench vises
- Soldering irons
- Parts cabinet - Parts bins
- Metal
- Little Joe circuit board holder
- Peresci test panel Model 475
- Fluke voltohmmeter
- 10 Tektronic Oscilloscopes 475
- Simpson 260 GXL Voltmeter
- Sterling 5 speed 1/2 hp drill press
- 3M cable shears - 3M Simpson voltohmmeters

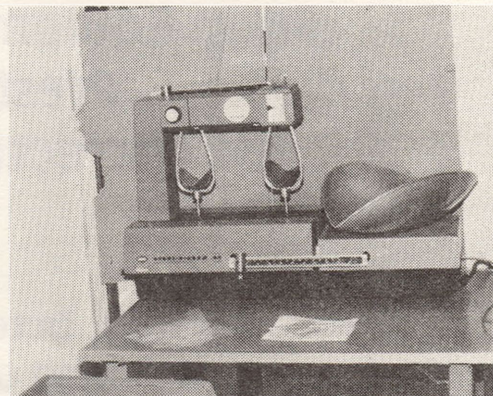


- Circuit Boards
- Diodes - Terminals - Transistors - Resistors
- Relays - Switches - Housings - Chip Boards
- Connectors - Panels - Chips
- Pins - Solder - Sockets - Cables
- Power Supplies - Chassis
- Cory Coffee Maker



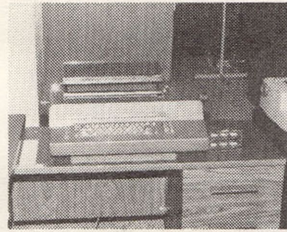
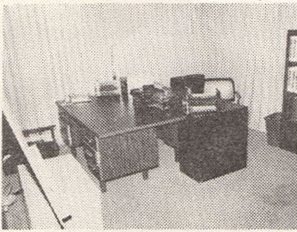
COMPONENT PARTS INVENTORY **Very Large Quantities Of**

- Aero-Motive balancer
- Kepco Power supply
- Hewlett Packard 3311A function generator
- Hewlett Packard frequency counter
- Mura Meter Model 90M
- Calcomp T2004 Marksman exercizer
- Mercury platform scales with tel-a-dial
- Bagger
- Step ladders - Supplies
- ... many, many other items
- Packing Material and Equipment



GOLDEN STATE AUCTIONEERS, INC.

One Hallidie Plaza, Suite 701 • San Francisco, California 94102
Telephone: **(415) 981-6941 or (415) 820-2357**



OFFICE FURNITURE

- New executive walnut credenzas
- Secretarial and Executive L-Shaped Modular Desks
- Executive and low back swivel chairs
- Secretarial posture chairs
- Upholstered side arm chairs
- Sofas
- Conference table with chairs
- Heavy duty deluxe typing tables
- 2, 3, 4, 5, & 6 drawer lateral files
- 2, 4 and 5 drawer vertical legal and letter
- Tab file lateral cabinets
- Bookcases
- Metal 2 door storage cabinets
- Sections of metal library adjustable shelving
- Tub files
- Five drawer plan files
- Data and computer files
- Table lamps - End tables

HUNDREDS OF

- Letter trays - staples
- Sections of metal shelving
- Office Supplies
- Conference table with matching chairs
- Universal prom programmer
- Easy file blue print cabinets
- Bishop graphic viewers
- Drafting tables with lights and stools
- Mutok drafter
- Folding tables - folding - chairs
- Paper cutters
- Roldex files
- Bulletin boards

HUNDREDS OF

- Letter trays - staples
- Sections of metal shelving
- Office Supplies

DESKS

- Executive with Credenzas
- Metal Modular
- Metal - Wood
- Typing desks

TYPEWRITERS

- 15 IBM Selectric Correcting II typewriters

FILE CABINETS!! MANY

- 2, 3, 4 Drawer Metal
- Some locking 2, 3, 4, Drawer lateral
- Xerox 9200 sorter - Xerox 400 copier
- Diablo Systems Hytype Printer model 1345A
- Sony Cassette Corder TC92
- Toshiba calculators
- Rockwell calculators
- Frieden calculators
- Victor calculators
- Adler calculators
- Texas Instrument calculators T1-5040
- Swingline 6100 paper holder
- Bind Fast II Binder - Master paper punch
- Pitney Bowes scales
- Frieden Model 9112 parcel machine
- Check writers
- Digital check writer - Wall clocks
- Electric pencil sharpeners
- Refrigerators - Portable Heaters
- Extension Cords
- 1 CDC control data, 9427 cartridge disk drive Model B51, Serial 002352
- Sanjo Video TV, Mod. BM4209, Ser. 18614610
- 10 Tektronic Model 465 oscilloscope
- 1 Simpson 260 Voltohmmeter
- Fluke 35233
- 1 Hitachi Video Monitor VM905AO, Serial 130385
- 1 Control data cartridge disc drive 9427H, Serial 00321
- 1 Control data cartridge disk drive, CRT only
- 1 Elgar series 400V variable frequency oscillator, 1001A
- 1 Anderson Jacobson acoustic data coupler A242
- 1 Data I/O Programmer V, Ser. 5-0603
- 1 Data I/O Programmer Model 16, Serial 16-0053
- 1 Simpson Voltohmmeter 260, Series 6M

LOTS LOTS MORE

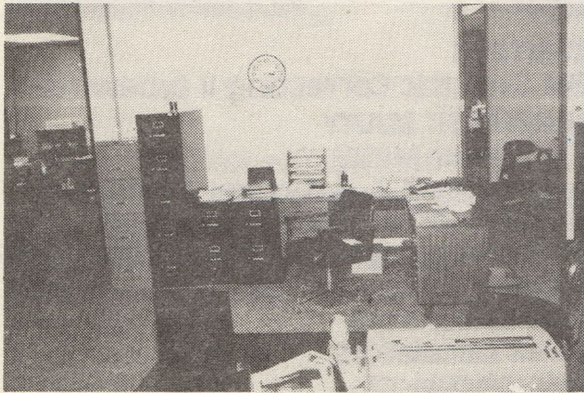
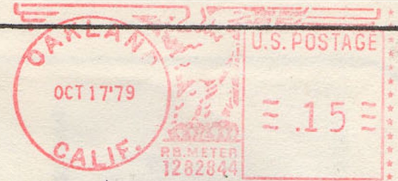
GOLDEN STATE AUCTIONEERS, INC.

One Hallidie Plaza, Suite 701 • San Francisco, California 94102
Telephone: **(415) 981-6941 or (415) 820-2357**

GOLDEN STATE AUCTIONEERS, INC.

One Hallidie Plaza, Suite 701 • San Francisco, California 94102

Telephone: (415) 981-6941 or (415) 820-2357



RECEIVED OCT 22 1979

FIRST CLASS MAIL

Microage
1425 W. 12th Place #101
Tempe, Arizona
85281

DIRECTIONS

Nimitz Freeway 17

West on Marina Blvd

First left 1/2 mile becomes

Wicks Boulevard

THINKING OF AN AUCTION?

Call Lloyd Ashman • (415)-820-2357

public auction

OFFICE FURNITURE AND EQUIPMENT

Information Terminals
ADM3A Desk Top Video
Data Processors

On The Premises

INSPECTION DAY OF SALE
9:00 A.M. Until Sale Time

TERMS OF SALE

All property will be offered by the piece. All sales are final, and are payable upon conclusion of the sale. Payment may be made by cash, certified checks, cashier's checks or company and personal checks. The latter two types of payment must be accompanied by a letter from the buyer's bank stating that it will guarantee payment of any checks written by said buyer up to a said amount and proof of identity. Full payment must be made before removal of purchases. Everything will be sold As-is-Where-is. Cost and responsibility of removal of purchases remain with the purchaser, although every effort will be made to facilitate removal. While quantities and descriptions are believed to be correct, there are no guarantees. The Principals, Auctioneers or Advertising counsel will not be held responsible for advertising inaccuracies or discrepancies. Quantities must be checked before removal as adjustments will not be made after purchases have been removed from the premises. All buyers must acknowledge the terms of sale printed on the registration cards. WE THANK YOU FOR YOUR PATRONAGE.